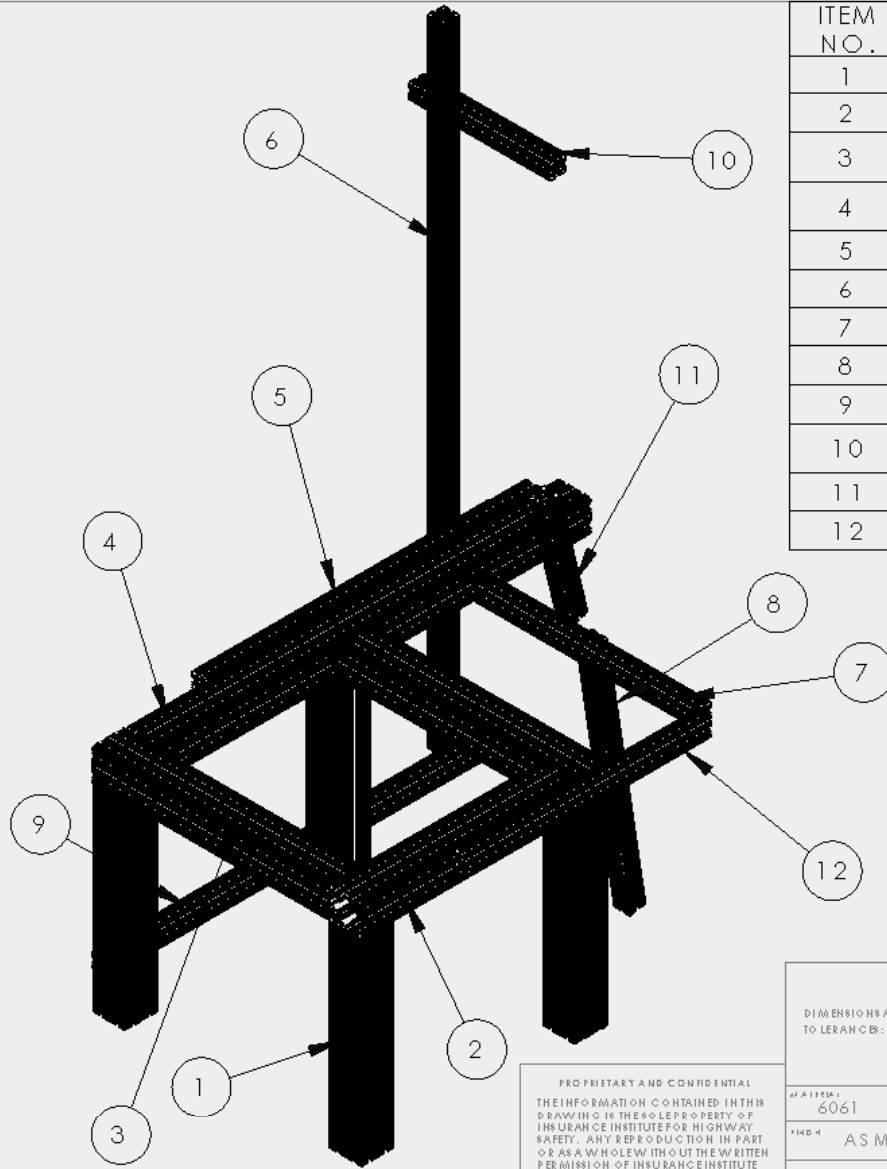




Booster Test Fixture Drawing Package

The information contained in these drawings describes the current IIHS design for the Booster Test Fixture. This structure only serves as a platform for the critical components (test seat and seatbelt) in the Booster Seat Belt Fit Evaluation Protocol. Neither the design nor the dimensions are critical, and this information is only intended to serve as a resource when designing new fixtures.



ITEM NO.	8020 PART NUMBER	LENGTH (cm)	QTY.
1	3030	46	4
2	3030	50	1
3	3030	55.3	2
4	3030	101.5	1
5	1515	78	1
6	1515	149	1
7	1515	52	1
8	1515	59	1
9	1515	94	1
10	1515	33	1
11	1515	28.5	1
12	1515	55	1

PROPRIETARY AND CONFIDENTIAL
 THE INFORMATION CONTAINED IN THIS
 DRAWING IS THE SOLE PROPERTY OF
 INSURANCE INSTITUTE FOR HIGHWAY
 SAFETY. ANY REPRODUCTION IN PART
 OR AS A WHOLE WITHOUT THE WRITTEN
 PERMISSION OF INSURANCE INSTITUTE
 FOR HIGHWAY SAFETY IS PROHIBITED.

DIMENSIONS ARE IN INCHES
 TO LEADING: 1/16"

DATE: 6/1/81

NO. 6061

AS MILLED

DO NOT SCALE DRAWING

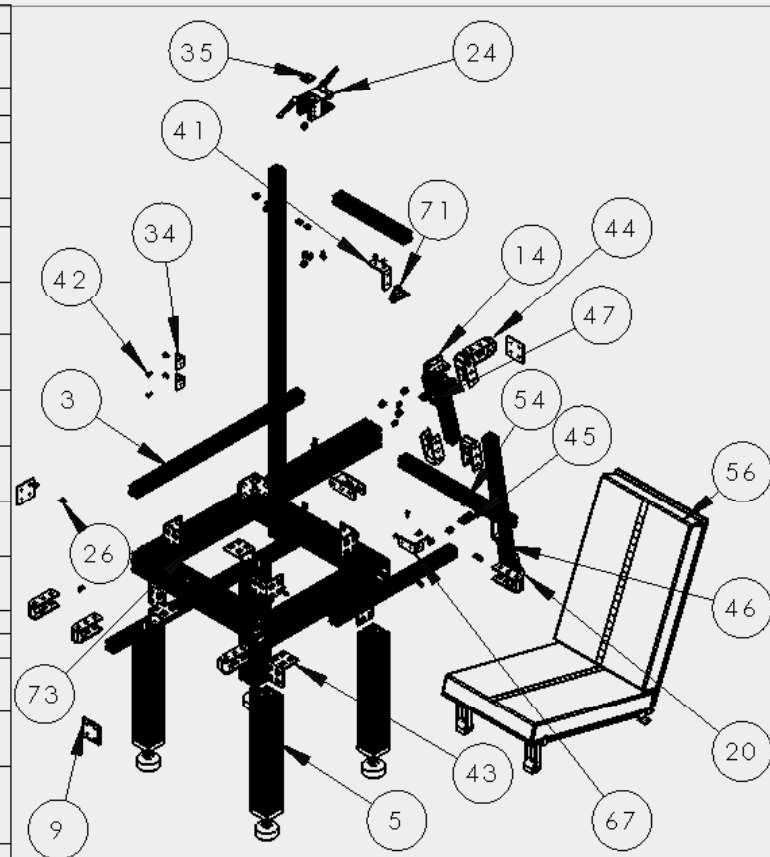
**INSURANCE INSTITUTE
 FOR HIGHWAY SAFETY**

8020 Lengths

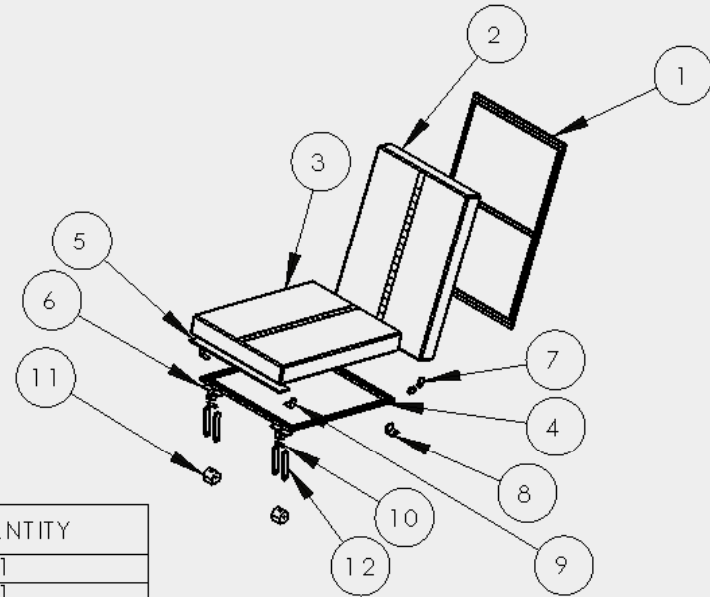
REV. A

SCALE: 1/8" = 1'-0"

Description	Number	Quantity
Anti Vibration Feet 8020 part # 2209	1	4
3/4" 6061 Spacer 8020 part #3030	4	4
End Cap 8020 part #2050	5	8
8020 part # 1515	9	3
Flanged Bearing 8020 part #6525	10	8
Anti Vibration Feet 8020 part #2207	14	1
Custom Locking Double Bearing	20	1
2 Hole Inside CB 8020 part #4302	24	3
End Cap 8020 part #2030	34	2
T Slot Slider 8020 part #3201	40	149
4 Hole Inside CB 8020 part #4301	41	1
5/16" L5/8" Bolt	42	177
5/16" L 1" Bolt	42a	3
8 Hole Inside CB 8020 part #4304	43	10
Pivot Nub Bracket Assembly	44	9
Seat Belt Attachment Slide (Custom)	45	2
Inboard Seatbelt Attachment Angle	46	1
Outboard Seat Belt Attachment Angle	47	1
Seat Assembly 7/16" 18 L5/8" w/washer	56	1
3 Hole Inside CB 8020 part #4280	64	2
Seat Belt Ring	71	
1/8" Bolt L2"w/nut	73	



DIMENSIONS ARE IN INCHES TO LEAST CB: ±1/8"	NAME 1	DATE		
	BEAM 4	1-10-2010		1-06-10
	CHG 1.0			
	IND APPL.			
	DRAWN			
	CHECKED			
	DATE			
	SCALE			
THE INFORMATION CONTAINED IN THIS DRAWING IS THE SOLE PROPERTY OF INSURANCE INSTITUTE FOR HIGHWAY SAFETY. ANY REPRODUCTION IN PART OR AS A WHOLE WITHOUT THE WRITTEN PERMISSION OF INSURANCE INSTITUTE FOR HIGHWAY SAFETY IS PROHIBITED.			Child Seat Test Chair Exploded View	
MATERIAL: Varies FINISH: <input checked="" type="checkbox"/>	DO NOT SCALE DRAWING		DEF: BWC, MD. A	
SCALE: 1:30 (IND 41)			SHEET 1 OF 1	



ITEM NO.	NAME	PART NUMBER	QUANTITY
1	Seat Back Assembly	N/A	1
2	Seat Back Cushion	N/A	1
3	Seat Bottom Cushion	N/A	1
4	Seat Bottom Assembly	N/A	1
5	Bottom Cushion Bar	N/A	1
6	Front Seat Mount	N/A	4
7	Seat Connection Tab	N/A	4
8	Rear Seat Mount Tab	N/A	2 (R+L)
9	Front Seat Bracket	N/A	2
10	Spacer	N/A	6 (2 Long, 4 Short)
11	15 Series Pivot Nub 90	4388	2
12	Front Long Seat Tab	N/A	4

DIMENSIONS ARE IN INCHES
TO LERANCB: ±1/8"

PROPRIETARY AND CONFIDENTIAL
THE INFORMATION CONTAINED IN THIS
DRAWING IS THE SOLE PROPERTY OF
INSURANCE INSTITUTE FOR HIGHWAY
SAFETY. ANY REPRODUCTION IN PART
OR AS A WHOLE WITHOUT THE WRITTEN
PERMISSION OF INSURANCE INSTITUTE
FOR HIGHWAY SAFETY IS PROHIBITED.

MATERIAL VARIES

FINISH VARIES

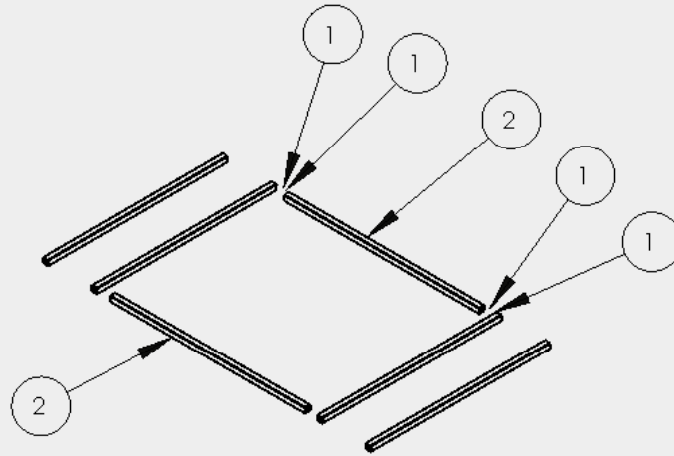
DO NOT SCALE DRAWING

NAME	DATE
DESIGNER	1-3-10
CHECKED	
ENG APPR.	
MFG APPR.	
D.A.	
COMMENTS	

**INSURANCE INSTITUTE
FOR HIGHWAY SAFETY**

SEAT ASSEMBLY
EXPLODED VIEW

REV. A	REV. NO.	REV.
SCALE: 1:20	IN: 1001-42A	DATE: 10-1

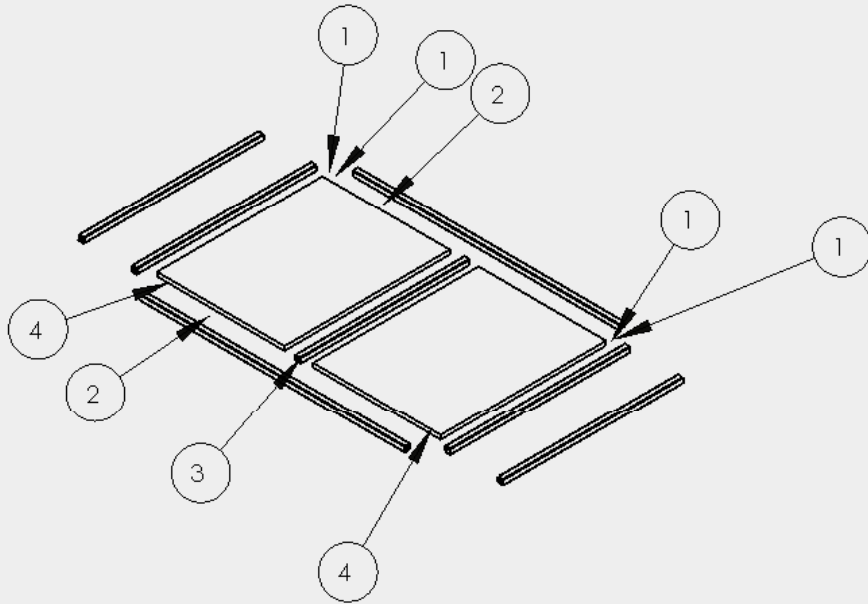


ITEM NO.	ITEM	QUANTITY
1	.065" Square Tube .5"X.5"X16 9/16"	4
2	.065" Square Tube .5"X.5"X18"	2

PROPRIETARY AND CONFIDENTIAL
 THE INFORMATION CONTAINED IN THIS
 DRAWING IS THE SOLE PROPERTY OF
 INSURANCE INSTITUTE FOR HIGHWAY
 SAFETY. ANY REPRODUCTION IN PART
 OR AS A WHOLE WITHOUT THE WRITTEN
 PERMISSION OF INSURANCE INSTITUTE
 FOR HIGHWAY SAFETY IS PROHIBITED.

DIMENSIONS ARE IN INCHES TOLERANCES: ±1/8"	DATE	1-3-10
	DESIGNER	C. MCCLINNEY
	CHECKED	
	APPROVED	
	DRAWN	
MATERIAL	MILD STEEL	
FINISH	AS MILLED	
DO NOT SCALE DRAWING		

INSURANCE INSTITUTE FOR HIGHWAY SAFETY		
SEAT BOTTOM SUBASSEMBLY		
REV A	REV. NO.	REV.
SCALE: 1:10	DATE: 1-3-10	DRAWN BY: C. MCCLINNEY



ITEM NO.	ITEM	PART NUMBER	QUANTITY
1	.065" Square Tube .5"X.5"X16 9/16"	N/A	4
2	.065" Square Tube .5"X.5"X24.5"	N/A	2
3	.065" Square Tube .5"X.5"X15 9/16"	N/A	1
4	Seat Back Filler 15.25"X11.75"X.375"	N/A	2

PROPRIETARY AND CONFIDENTIAL
 THE INFORMATION CONTAINED IN THIS
 DRAWING IS THE SOLE PROPERTY OF
 THE INSURANCE INSTITUTE FOR HIGHWAY
 SAFETY. ANY REPRODUCTION IN PART
 OR AS A WHOLE WITHOUT THE WRITTEN
 PERMISSION OF INSURANCE INSTITUTE
 FOR HIGHWAY SAFETY IS PROHIBITED.

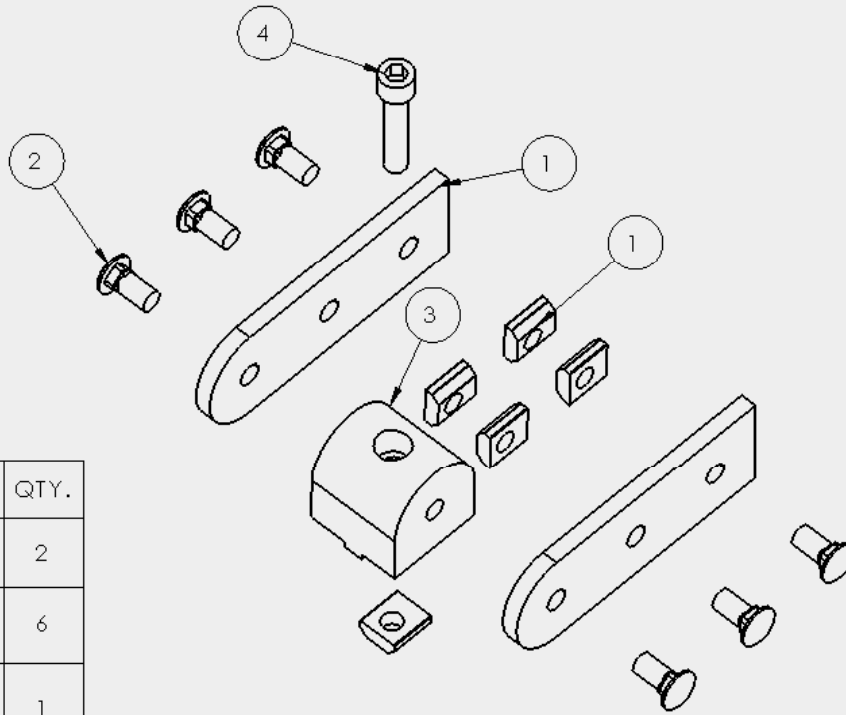
DIMENSIONS ARE IN INCHES TO LEAN C B: ±1/8"		NAME	DATE
DESIGNER	VARIES	ENGINEER	1-3-10
DRW'G	VARIES	CHKD	
DATE		APP'G	
		DATE	
		SCALE	
DO NOT SCALE DRAWING			

**INSURANCE INSTITUTE
FOR HIGHWAY SAFETY**

SEAT BACK
SUBASSEMBLY

REV. A DWG. NO. REV.

SCALE: 1:1 IN HOLD: N/A SHEET 1 OF 1



ITEM NO.	NAME	PART NUMBER	QTY.
1	80/20 Pivot Arm	4396	2
2	5/16-18 UNC - 2A - 1.5LG Socket Head Cap Screw	N/A	6
3	15 Series 0 Degree Pivot Nub	4387	1
4	5/16 18 L 1.5 Hex Socket Screw	N/A	1
5	15 Series Standard T-nut for 5/16 18 thread	3201	5

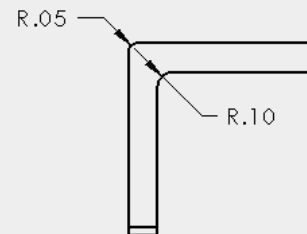
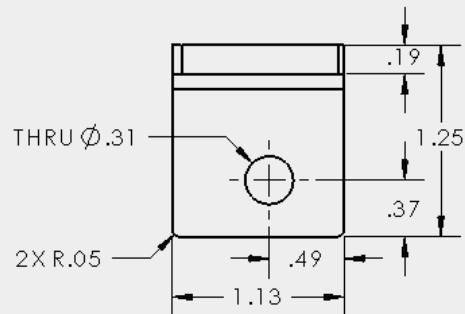
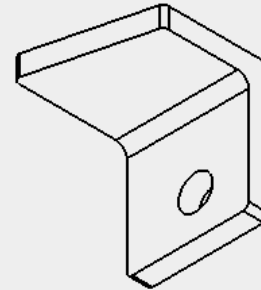
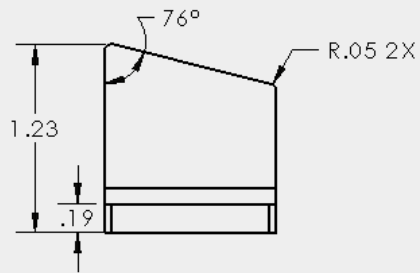
DIMENSIONS ARE IN INCHES TO LEADING ZEROS: ±1/8"	REV 4	DATE
	REV 5	DATE
	REV 6	DATE
	REV 7	DATE
	REV 8	DATE
DATE	BY	CHKD
DATE	BY	CHKD
DATE	BY	CHKD
DATE	BY	CHKD
DATE	BY	CHKD

**INSURANCE INSTITUTE
FOR HIGHWAY SAFETY**

**PIVOT NUB BRACKET WITH
SLIDER SUBASSEMBLY**

PROPRIETARY AND CONFIDENTIAL
 THE INFORMATION CONTAINED IN THIS
 DRAWING IS THE SOLE PROPERTY OF
 THE INSURANCE INSTITUTE FOR HIGHWAY
 SAFETY. ANY REPRODUCTION IN PART
 OR AS A WHOLE WITHOUT THE WRITTEN
 PERMISSION OF INSURANCE INSTITUTE
 FOR HIGHWAY SAFETY IS PROHIBITED.

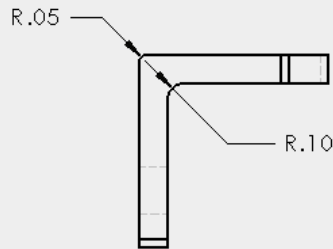
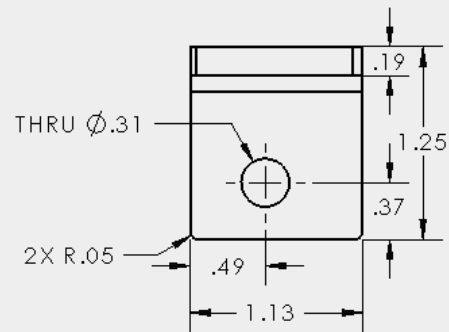
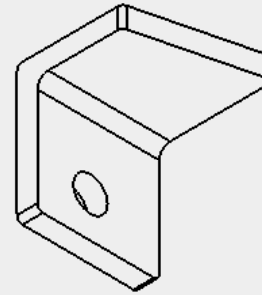
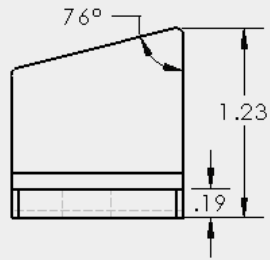
REV	BY	CHKD	DATE
A			
SCALE	1:2	IN	1/8" = 1"



PROPRIETARY AND CONFIDENTIAL
THE INFORMATION CONTAINED IN THIS
DRAWING IS THE SOLE PROPERTY OF
THE INSURANCE INSTITUTE FOR HIGHWAY
SAFETY. ANY REPRODUCTION IN PART
OR AS A WHOLE WITHOUT THE WRITTEN
PERMISSION OF INSURANCE INSTITUTE
FOR HIGHWAY SAFETY IS PROHIBITED.

DIMENSIONS ARE IN INCHES TO LEAN CB: 41/8"		REV 1	DATE
MATERIAL	MILD STEEL	DESIGN	1-2-10
FINISH	AS MILLED	CHKD BY	
DO NOT SCALE DRAWING		IND APPR.	
		MFG APPR.	
		D.A.	
		COMPLD BY	

INSURANCE INSTITUTE FOR HIGHWAY SAFETY		
LEFT REAR SEAT MOUNT		
REV A	REV. NO.	REV.
SCALE: 1:1	IN HOLD. N/A	DATE: 1-2-10



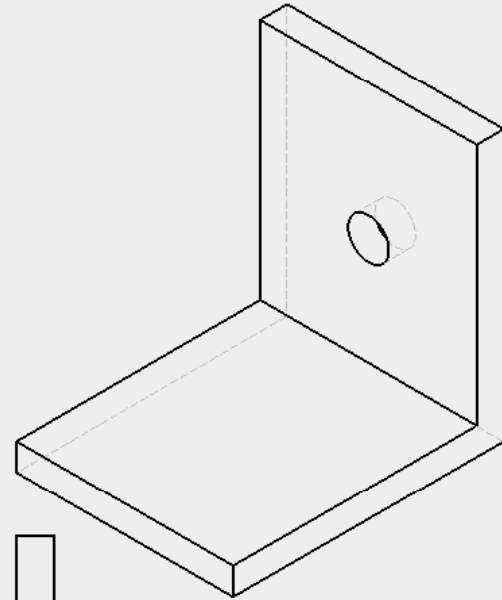
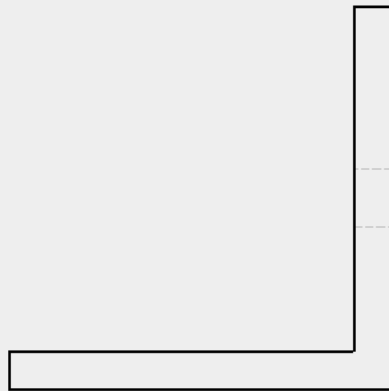
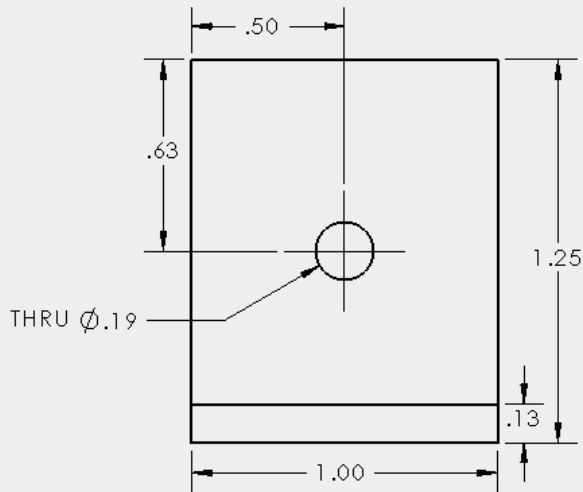
PROPRIETARY AND CONFIDENTIAL
THE INFORMATION CONTAINED IN THIS
DRAWING IS THE SOLE PROPERTY OF
THE INSURANCE INSTITUTE FOR HIGHWAY
SAFETY. ANY REPRODUCTION IN PART
OR AS A WHOLE WITHOUT THE WRITTEN
PERMISSION OF INSURANCE INSTITUTE
FOR HIGHWAY SAFETY IS PROHIBITED.

DIMENSIONS ARE IN INCHES TOLERANCES: \pm .005		
DATE	DRAWN	DATE
1-2-10	C. MCLENNAN	
DESIGNED	BY	
CHECKED	BY	
APPROVED	BY	
DATE	BY	
MATERIAL: MILD STEEL		
FINISH: AS MILLED		
DO NOT SCALE DRAWING		

**INSURANCE INSTITUTE
FOR HIGHWAY SAFETY**

RIGHT REAR
SEAT MOUNT

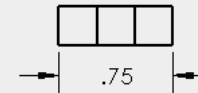
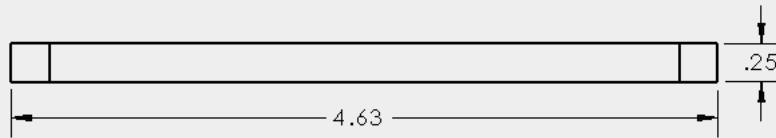
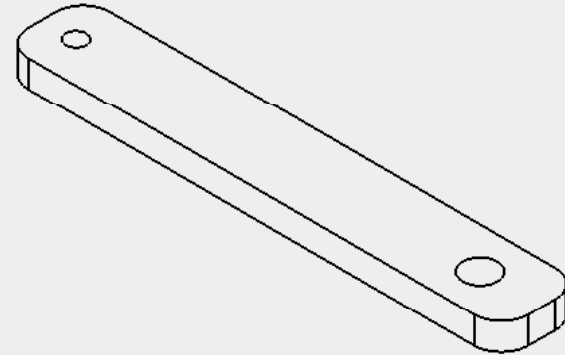
REV.	BY	DATE	REV.
A			
SCALE: 1:1	TITLE: 44A	DATE: 1-2-10	



PROPRIETARY AND CONFIDENTIAL
 THE INFORMATION CONTAINED IN THIS
 DRAWING IS THE SOLE PROPERTY OF
 INSURANCE INSTITUTE FOR HIGHWAY
 SAFETY. ANY REPRODUCTION IN PART
 OR AS A WHOLE WITHOUT THE WRITTEN
 PERMISSION OF INSURANCE INSTITUTE
 FOR HIGHWAY SAFETY IS PROHIBITED.

DIMENSIONS ARE IN INCHES TOLERANCES: $\pm .005$		RAW 1	DATE
DESIGNER	C. M. CLINNEY	1-3-10	
CHECKED			
ENG. APPR.			
MFG. APPR.			
D.A.			
MATERIAL		COMMENTS	
MILD STEEL			
FINISH			
AS MILLED			
DO NOT SCALE DRAWING			

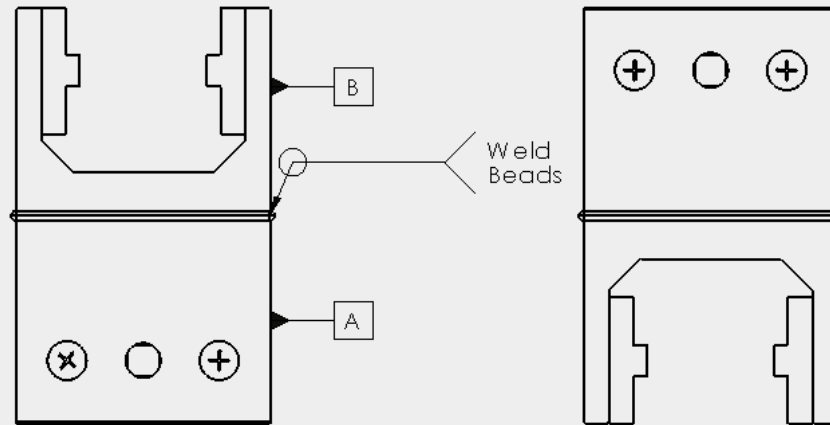
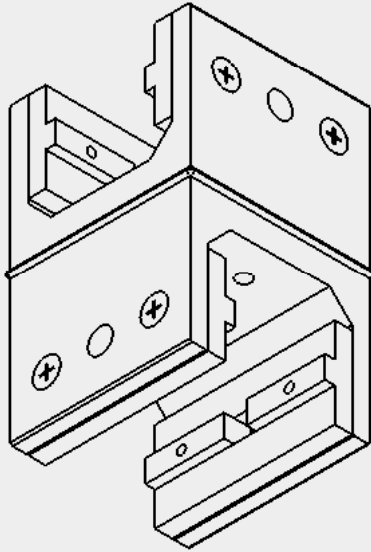
INSURANCE INSTITUTE FOR HIGHWAY SAFETY	
FRONT SEAT MOUNT BRACKET	
SET	REV. NO.
A	
SCALE: 1:1	DATE: 1-3-10



PROPRIETARY AND CONFIDENTIAL
 THE INFORMATION CONTAINED IN THIS
 DRAWING IS THE SOLE PROPERTY OF
 INSURANCE INSTITUTE FOR HIGHWAY
 SAFETY. ANY REPRODUCTION IN PART
 OR AS A WHOLE WITHOUT THE WRITTEN
 PERMISSION OF INSURANCE INSTITUTE
 FOR HIGHWAY SAFETY IS PROHIBITED.

DIMENSIONS ARE IN INCHES TO TOLERANCES: $\pm 1/8"$		DATE	BAIT
DRAWN	C. W. CLENNETT	1-3-18	
CHECKED			
ENG. APPL.			
MFG. APPL.			
D.A.			
COM. IN CH.			
MATERIAL: 6061 ALUMINUM			
FINISH: AS MILLED			
DO NOT SCALE DRAWING			

INSURANCE INSTITUTE FOR HIGHWAY SAFETY	
LONG SEAT TAB	
REV. NO.	REV.
A	
SCALE: 1:1	DRAWN BY: CWA

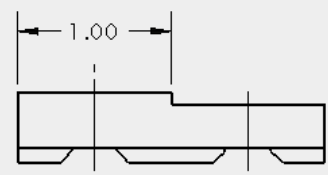
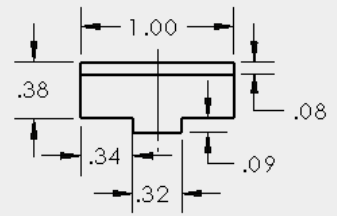
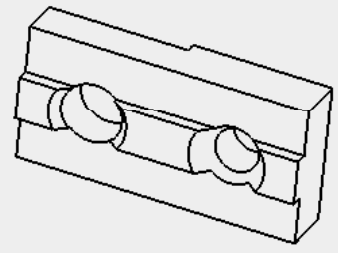
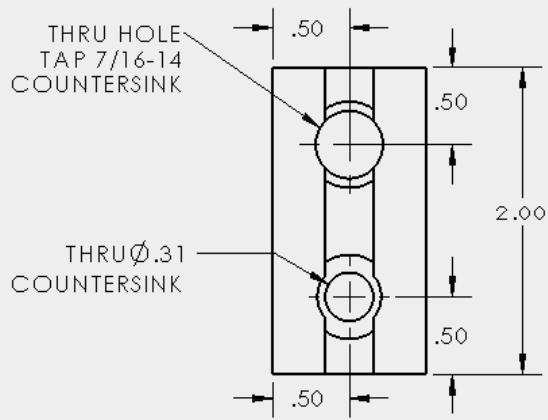


A and B both standard 80/20 Part# 6503 with flanges removed

PROPRIETARY AND CONFIDENTIAL
 THE INFORMATION CONTAINED IN THIS
 DRAWING IS THE SOLE PROPERTY OF
 INSURANCE INSTITUTE FOR HIGHWAY
 SAFETY. ANY REPRODUCTION IN PART
 OR AS A WHOLE WITHOUT THE WRITTEN
 PERMISSION OF INSURANCE INSTITUTE
 FOR HIGHWAY SAFETY IS PROHIBITED.

DIMENSIONS ARE IN INCHES TOLERANCES: ±1/8"		DATE	DATE
DRAWN	J.C. Robinson	01-06-10	
CHECKED			
INSP. APPR.			
DATE			
MATERIAL: 6061 ALUMINUM		COMMENTS: This part is made from two 80/20 range locking bearing Part #6503 from 80/20. The largest of the bearing is cut off and the previous weld is replaced. There is a slight overlap. The wide bearing mechanism is welded and screwed in.	
FINISH: AS MILLED		SCALE: 1:1	DATE: 01-06-10
DO NOT SCALE DRAWING		SCALE: 1:1	DATE: 01-06-10

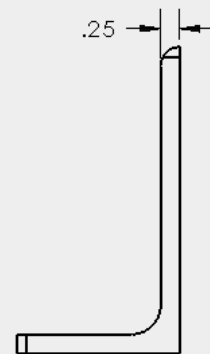
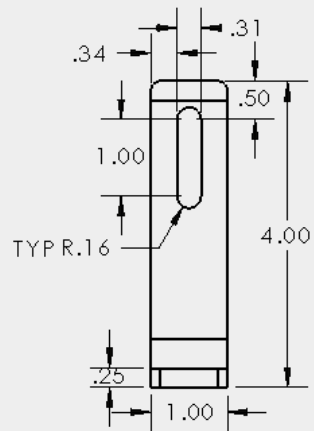
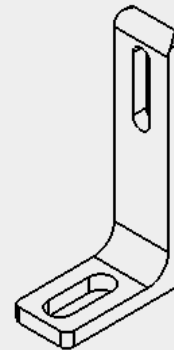
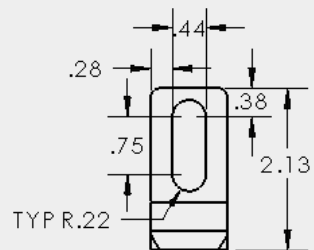
INSURANCE INSTITUTE FOR HIGHWAY SAFETY	
CUSTOM LOCKING DOUBLE BEARING	
REV A	BY: C. W. D.
SCALE: 1:1	DATE: 01-06-10



PROPRIETARY AND CONFIDENTIAL
 THE INFORMATION CONTAINED IN THIS DRAWING IS THE SOLE PROPERTY OF THE INSURANCE INSTITUTE FOR HIGHWAY SAFETY. ANY REPRODUCTION IN PART OR AS A WHOLE WITHOUT THE WRITTEN PERMISSION OF INSURANCE INSTITUTE FOR HIGHWAY SAFETY IS PROHIBITED.

DIMENSIONS ARE IN INCHES TO LEASANTCS: 1/16"	DATE	1-3-10
	DRAWN	C. MCLELLAND
	CHKD BY	
	IND. APPR.	
	DATE	
MATERIAL	6061 ALUMINUM	
FINISH	AS MILLED	
DO NOT SCALE DRAWING		

INSURANCE INSTITUTE FOR HIGHWAY SAFETY		
SEAT BELT ATTACHMENT SLIDE		
REV. A	REV. NO.	REV.
SCALE: 1:1	WORKING: 4:4	DRAWN: 10:1



PROPRIETARY AND CONFIDENTIAL
 THE INFORMATION CONTAINED IN THIS
 DRAWING IS THE SOLE PROPERTY OF
 INSURANCE INSTITUTE FOR HIGHWAY
 SAFETY. ANY REPRODUCTION IN PART
 OR AS A WHOLE WITHOUT THE WRITTEN
 PERMISSION OF INSURANCE INSTITUTE
 FOR HIGHWAY SAFETY IS PROHIBITED.

DIMENSIONS ARE IN INCHES TOLERANCES: ±.010"		DATE	DATE
DESIGN	C. MCCLINNEY	1-3-10	
CHECKED			
ENG. APPR.			
MFG. APPR.			
D.A.			
MATERIAL	6061 ALUMINUM	COM. # 415, MATERIALS FROM 224514 A16 MINSW AND 17	
FINISH	AS MILLED		
DO NOT SCALE DRAWING			

INSURANCE INSTITUTE FOR HIGHWAY SAFETY		
MOD SEATBELT MOUNT #4301		
REV. A	REV. NO.	REV.
SCALE 1:1	IN. HOLES .425	DIFF. TO 1